

2019 - 20

**Fort Lewis  
College  
Men's Club  
Ice Hockey**



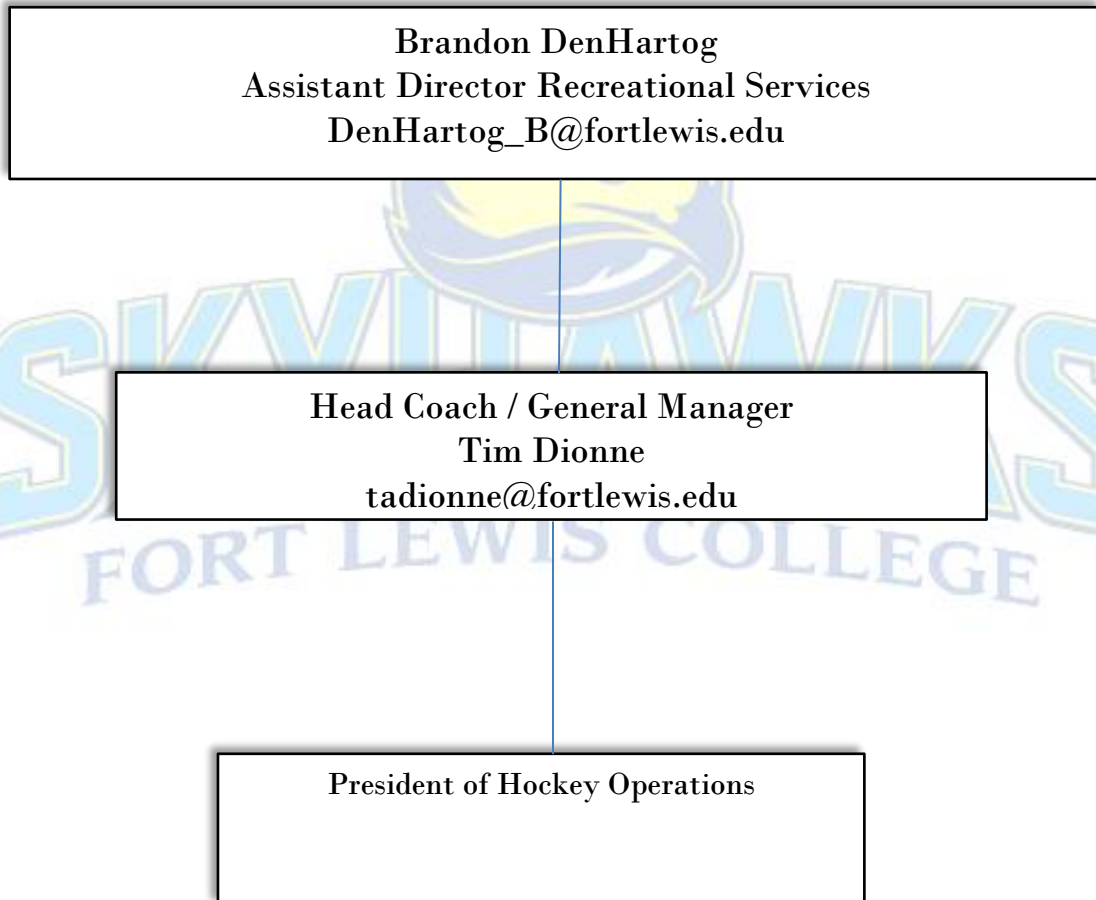
**[TEAM &  
ORGANIZATIONAL GUIDE]**

Summary of the Fort Lewis College Ice Hockey team and organization.

## Mission Statement

To establish a sustainable and reputable hockey program that provides an opportunity for student athletes to continue to play in a structured and competitive environment while gaining valuable life experiences.

## Organizational Chart



## Fort Lewis College Hockey

### **Roles & Responsibilities**

#### **Assistant Director Recreational Services**

The Assistant Director Recreational Services is responsible for overseeing all club sports along with other aspects of the athletic department. This is our organizations main point of contact and liaison between our program and all resources, personnel, and related items at the college. Working directly with the Head Coach/General Manager and the President of Hockey Operations in ensuring all roles, responsibilities and tasks are assigned and completed in pursuit of fulfilling the organizations mission and goals.

#### **Head Coach / General Manager**

The Head Coach/General Manager is responsible for the full year management of the entire organization and team. Working directly with the Assistant Director of Recreational Services and the President of Hockey Operations in ensuring all roles, responsibilities and tasks are assigned and completed in pursuit of fulfilling the organizations mission and goals.

Included in the Head Coach / General Manager responsibilities is creating and executing the curriculum for the development of the players in support of the teams mission statement, selecting and training additional personnel to support improving the teams on ice performance, handling the recruiting efforts and related tasks and events, monitor all budgetary activities related to the team and organization, act as the primary contact for league matters including scheduling for games and practices, lead all aspects for the Friends of Fort Lewis College Hockey, media relations including print, social media, website design and content.

#### **President of Hockey Operations**

The President of Hockey Operations is responsible for overseeing the seasonal operation of the organization and team. Working directly with the Head Coach / General Manager and the Assistant Director of Recreational Services in ensuring all roles, responsibilities and tasks are assigned and completed in pursuit of fulfilling the organizations mission and goals.

Included in the President's responsibilities is acting as the primary liaison between the administration and coaching staff, and the players, creation and implementation of a school and community service activity each season, assisting with coordinating players support of the team's fundraising events, contributing to team media and promotional activities, fulfilling all required administrative tasks as requested by the Assistant Director Recreational Services and maintaining consistent and open communication regarding all team activities, implementing the end of season banquet for players, overseeing any official or unofficial activities that derive from a collaboration of players and could be interpreted as being representative of the team and organization.

## Fort Lewis College Hockey

### **2018-20 Player Information**

#### Competition & Commitment

Fort Lewis College and many of the colleges and universities we play have a history and tradition with their hockey programs and most strive to qualify for the ACHA DIII regional and national tournaments each season. ACHA DIII rosters consist of players from throughout the US and usually have organized and competitive experience in the youth and high school levels. Many players are seeking a structured program that allows a flexible balance of academics and athletics.

The overall success of the team and organization is dependent on the commitment of each player to the scheduled on and off ice sessions. Attending scheduled practice, games, & team events is required and should seldom conflict with academic requirements and/or your schedule.

#### Player Fee

In order to support the operation of the team it is necessary that each player that participates in practices and any portion of games pay a \$450 player fee to assist the team with related expenses. Failure to submit your player fee as indicated in the below schedule may result in the inability to participate in practices, games, or other related team events. Certain exceptions can be made upon request and players should speak with the General Manager for more information.

**\$150 on or before September 27, 2019**

**\$150 on or before November 8, 2019**

**\$150 on or before January 17, 2020**

#### Fundraising

Players are an important part of the fundraising efforts for the team and organization. They collaborate directly with the President of Hockey Operations on special events, tickets sales, and promotional activities to raise important revenue that helps fund the team's operations. By being a member of the team, each player needs to assist in all fundraising activities in some capacity as coordinated by the President. This includes but is not limited to the following items:

- Participation in promoting special events and ticket sales on campus by attending activities as scheduled and coordinated by the President of Hockey Operations.
- Support special events that occur each semester by participating in meetings, aligning resources, and assisting during the event.

## Fort Lewis College Hockey

### Community Service

The President of Hockey Operations is tasked with completing a community service project each semester during the season and players are actively involved in assisting in ensuring it is completed. Projects vary greatly from each semester, but one is focused on the campus community, the other on the Durango community. The goal is to set an example for others to follow by supporting causes in need where we can help in some way. Individual participation will vary but it is each player's responsibility to be involved in some capacity as determined by the President. Each project needs to be approved by the General Manager before it can be scheduled.

## 2019-20 Season Schedule

### Fall Semester

- Tuesday, September 10<sup>th</sup>, 6:00pm, Introductory Team Meeting
- September 27 – 29, Santa Fe on ice Development Camp
- October 10<sup>th</sup>, 7:00pm, First Durango Ice
- October 11<sup>th</sup>, 5:00pm – 9:00pm, Chapman Rink Official Opening
- October 13<sup>th</sup>, 5:15pm Practice
- October 15<sup>th</sup>, 6:00am Regular Season Practices Begin
- October 16<sup>th</sup>, 6:00am Regular Season Practices Begin
- October 18<sup>th</sup> Western State Colorado University, Away
- October 19<sup>th</sup> Western State Colorado University, Away
- October 25<sup>th</sup>, Colorado College, Home
- October 26<sup>th</sup>, Colorado College, Home
- November 1<sup>st</sup>, DAHL, Home
- November 8<sup>th</sup>, Western State Colorado University, Home
- November 9<sup>th</sup>, Western State Colorado University, Home
- November 15<sup>th</sup>, DAHL, Home
- November 21<sup>st</sup>, Captain's Practice (Last practice for the semester)
- December 6<sup>th</sup>, Skyhawks Cup Alumni Game

### Spring Semester

- January 15<sup>th</sup> & 16<sup>th</sup>, Second Semester Practices Begin
- January 31<sup>st</sup>, Colorado College, Away
- February 1<sup>st</sup>, Colorado College, Away
- February 6<sup>th</sup>, Captain's Practice (Last practice for the semester)
- February 7<sup>th</sup>, DAHL, Home